

Ms. A. 1. 1.

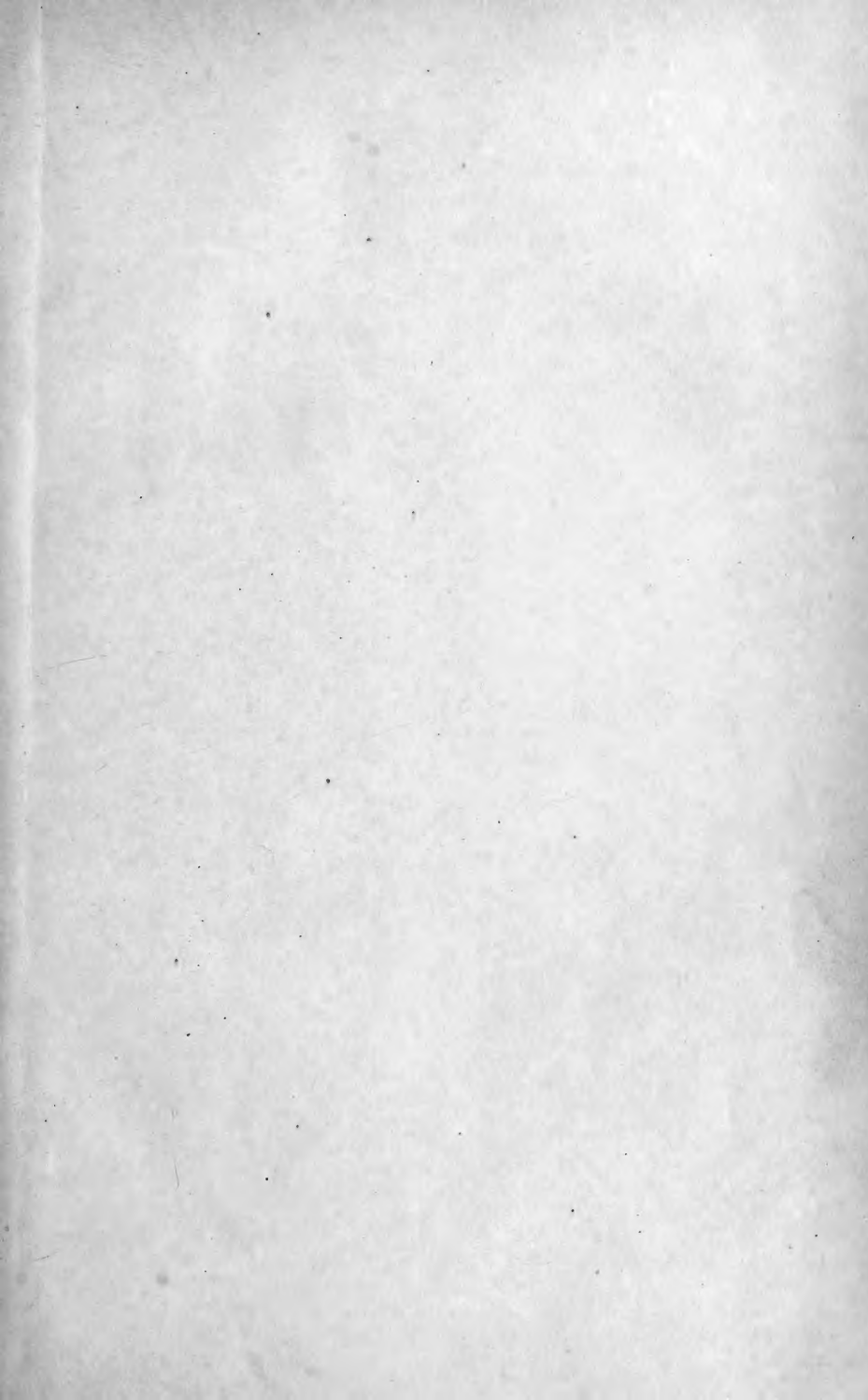




✓  
Rathbun, R.











**LIST OF MARINE INVERTEBRATA FROM THE NEW ENGLAND COAST, DISTRIBUTED BY THE U. S. COMMISSION OF FISH AND FISHERIES.**

SERIES I.

[Distributed in fifty sets, put up by Mr. Richard Rathbun, under the direction of Professor A. E. Verrill, 1879.]

EXPLANATION.

The specimens included in the following list are preserved in alcohol, unless otherwise stated. The authority given for the name is usually the author who first used the *combined binomial* name herein adopted, and is not necessarily that of the author who first described the species, or gave the *specific* name. (A name in parentheses is authority for the specific name only.)

The species are not all included in each of the fifty sets, but those sent in each numbered set are checked on the list bearing the corresponding number. The species now distributed are not to be considered as *the most common*, but simply those which happen to be at present most abundantly represented in the collections of the Fish Commission, or those which, for other reasons, can be most conveniently distributed at this time, and have been so selected as to give representatives of most of the important groups. It will also be understood that the species included in this list form but a very small proportion (less than one-twelfth) of the total number of species contained in the collections made by the Fish Commission on the New England coast.

**PYCNOGONIDA.**

- 1. *Nymphon hirtum* Fabr.  
U. S. F. C.—Off Halifax, N. S., 52 fath., 1877.
- 2. *Phoxichilidium maxillare* Stimp.  
U. S. F. C.—Casco Bay, shore.

**MEROSTOMATA.**

- 2a. *Limulus Polyphemus* Latr. Dry.  
U. S. F. C.—Cape Cod Bay, shore, 1879.

**CRUSTACEA.—DECAPODA.**

- 2b. *Gelasimus pugnax* Smith.  
U. S. F. C.—Cape Cod Bay, shore, 1879.
- 2c. *Gelasimus pugnax* Smith.  
U. S. F. C.—New Haven, Conn., shore.
- 3. *Gelasimus pugilator* Latr.  
U. S. F. C.—Vineyard Sound, Mass., shore.
- 3a. *Callinectes hastatus* Ordway.  
U. S. F. C.—New Haven, Conn.
- 3b. *Platyonichus ocellatus* Latr. Young.  
U. S. F. C.—Cape Cod Bay, surface, 1879.
- 4. *Platyonichus ocellatus* Latr.  
U. S. F. C.—Vineyard Sound, Mass.

- 4a. *Cancer borealis* Stimpson. Dry  
U. S. F. C.—Casco Bay, Maine, shore.
- 5. *Cancer irroratus* Say.  
U. S. F. C.—Vineyard Sound, Mass.
- 5a. *Cancer irroratus* Say. Young.  
U. S. F. C.—Gloucester, Mass., shore.
- 6. *Hyas coarctatus* Leach.  
U. S. F. C.—Gulf of Maine, 22 to 44 fath.
- 7. *Libinia emarginata* Leach.  
U. S. F. C.—Vineyard Sound, Mass.
- 8. *Eupagurus pollicaris* Stimp.  
U. S. F. C.—Vineyard Sound, Mass.
- 9. *Eupagurus pollicaris* Stimp.  
U. S. F. C.—Off Nantucket I.
- 9a. *Eupagurus pollicaris* Stimp.  
U. S. F. C.—Off Noank, Conn.
- 10. *Eupagurus pubescens* Brandt.  
U. S. F. C.—Coast of Maine, 20 to 34 fath.
- 11. *Eupagurus bernhardus* Brandt.  
U. S. F. C.—Gloucester, Mass.
- 11a. *Homarus Americanus* Edwards.  
U. S. F. C.—New Haven, Conn.

11b. *Homarus Americanus* Edwards.  
U. S. F. C.—Vineyard Sound, Mass.

12. *Crangon vulgaris* Fabr.  
U. S. F. C.—Massachusetts coast.

13. *Pandalus borealis* Kröyer.  
U. S. F. C.—Mass. Bay, 40 to 55 fath.

14. *Pandalus Montagu* Leach.  
U. S. F. C.—Mass. Bay, 42 to 50 fath.

15. *Hippolyte spina* Leach.  
U. S. F. C.—Bay of Fundy, 10 to 20 fath.

#### CRUSTACEA.—SCHIZOPODA.

15a. *Thysanopoda inermis* Kröyer.  
U. S. F. C.—Cape Cod, from whale stomach.

16. *Thysanopoda Norvegica* M. Sars.  
U. S. F. C.—Bay of Fundy, surface.

17. *Mysis mixta* Lilljeborg.  
U. S. F. C.—Mass. Bay, 40 to 50 fath.

#### CRUSTACEA.—CUMACEA.

18. *Diastylis quadrispinosus* G. O. Sars.  
U. S. F. C.—Off Grand Menan I., 8 to 10 fath.

#### CRUSTACEA.—AMPHIPODA.

19. *Ptilocheirus pinguis* Stimp.  
U. S. F. C.—Long I. Sd., off Noank, Conn.

19a. *Talorchestia longicornis* Smith.  
U. S. F. C.—Cape Cod, shore, 1879.

20. *Gammarus locusta* Fabr.  
U. S. F. C.—Gloucester Harbor, Mass.

#### CRUSTACEA.—ISOPODA.

21. *Idotea robusta* Kröyer.  
U. S. F. C.—Vineyard Sound, Mass.

22. *Idotea irrorata* Edw.  
U. S. F. C.—Vineyard Sd., Mass.

22a. *Æga psora* Kröyer.  
U. S. F. C.—George's Bank, on cod-fish.

#### CRUSTACEA.—CIRRIPEDIA.

23. *Lepas fascicularis* Ellis and Sol.  
U. S. F. C.—Vineyard Sound, Mass.

23a. *Balanus balanoides* Stimp. Dry.  
U. S. F. C.—New Haven, Conn., shore.

23b. *Balanus balanoides* Stimp. Dry.  
U. S. F. C.—Cape Cod Bay, shore, 1879.

#### ANNELIDA.—CHÆTOPODA.

24. *Lepidonotus squamatus* Leach.  
U. S. F. C.—Bay of Fundy, 10 to 25 fath.

25. *Harmothoe imbricata* Malmg.  
U. S. F. C.—Bay of Fundy, 10 to 25 fath.

26. *Nephtys cæca* Johnst.  
U. S. F. C.—Gloucester, Mass., shore.

27. *Nephtys incisa* Malmgren.  
U. S. F. C.—Off Vineyard Sd., 10 to 20 fath.

28. *Nereis pelagica* Linné.  
U. S. F. C.—Vineyard Sd., 6 to 12 fath.

29. *Nereis virens* Malmgren.  
U. S. F. C.—Gloucester, Mass., shore.

30. *Nothria conchylega* Malmgren.  
U. S. F. C.—Gulf of Maine, 85 fath.

31. *Nothria opalina* Verrill.  
U. S. F. C.—Gulf of Maine, 90 to 175 fath.

32. *Arabella opalina* Verrill.  
U. S. F. C.—Vineyard Sd., 8 to 12 fath.

33. *Rhynchobolus dibranchiatus* Ver.  
U. S. F. C.—Barnstable, Mass., shore.

34. *Sternaspis fossor* Stimp.  
U. S. F. C.—Mass. Bay, 25 to 45 fath.

35. *Clymenella torquata* Verrill.  
U. S. F. C.—Gloucester, Mass., shore.

36. *Thelepus cincinnatus* Malmgren.  
U. S. F. C.—Bay of Fundy, 10 to 30 fath.

37. *Potamilla reniformis* Malmg.  
U. S. F. C.—Bay of Fundy.

37a. *Spirorbis lucidus* Mörch.  
U. S. F. C.—Halifax, N. S.

38. *Spirorbis borealis* Daud.  
U. S. F. C.—Gloucester, Mass., shore.

39. *Clitellio irrorata* Verrill.  
U. S. F. C.—Gloucester, Mass., shore.

#### GEPHYRÆA.

40. *Phascolosoma cæmentarium* Quatr.  
U. S. F. C.—Gulf of Maine, 40 to 100 fath.

40a. *Phascolosoma Gouldii* Dies.  
U. S. F. C.—Salem and Barnstable, Mass.

#### CHÆTOGNATHA.

41. *Sagitta elegans* Verrill.  
U. S. F. C.—Vineyard Sd., surface.

#### NEMERTINA.

42. *Lineus viridis* Verrill.  
U. S. F. C.—Gloucester, Mass., shore.

42a. *Lineus viridis* Verrill.  
U. S. F. C.—Eastport, Me., shore.

43. *Cerebratulus ingens* Verrill.  
U. S. F. C.—Gloucester, Mass., shore.

**44. Cerebratulus roseus** Verrill.  
U. S. F. C.—Gloucester, Mass., shore.

**HOLOTHURIOIDEA.**

**45. Pentacta frondosa** Jæg.  
U. S. F. C.—Bay of Fundy, 10 to 40 fath.

**45a. Lophothuria Fabricii** Verrill.  
U. S. F. C.—Grand Menan, N. B.

**45b. Lophothuria Fabricii** Verrill.  
U. S. F. C.—Mass. Bay, 20 to 30 fath.

**46. Thyone Briareus** Selenka.  
U. S. F. C.—Vineyard Sd., Mass.

**46a. Leptosynapta Girardii** Verrill.  
U. S. F. C.—Cape Cod, shore, 1879.

**ECHINOIDEA.**

**47. Echinarachnius parma** Gray. Dry.  
U. S. F. C.—Vineyard Sd., Mass.

**48. Strongylocentrotus Dröbachiensis**  
A. Ag.  
U. S. F. C.—Eastport, Maine.

**49. Strongylocentrotus Dröbachiensis**  
A. Ag.  
U. S. F. C.—Wood's Holl, Mass.

**49a. Strongylocentrotus Dröbachiensis**  
A. Ag.  
U. S. F. C.—Off Cape Cod, 20 to 40 fath., '79.

**50. Arbacia punctulata** Gray. Dry.  
U. S. F. C.—Noank, Conn.

**50a. Arbacia punctulata** Gray. Dry.  
U. S. F. C.—Wood's Holl, Mass.

**50b. Arbacia punctulata** Gray. Dry.  
Young.  
U. S. F. C.—Wood's Holl, Mass.

**50c. Arbacia punctulata** Gray.  
U. S. F. C.—Vineyard Sd., Mass.

**ASTERIOIDEA.**

**51. Asterias vulgaris** Stimpson.  
U. S. F. C.—Halifax, N. S.

**51a. Asterias vulgaris** Stimp.  
U. S. F. C.—Eastport, Maine.

**51b. Asterias stellationura** Perrier.  
U. S. F. C.—Off Nova Scotia, 90 to 110 fath.

**52. Asterias Forbesii** Verrill.  
U. S. F. C.—Gloucester, Mass.

**53. Asterias Forbesii** Verrill. Dry.  
U. S. F. C.—Vineyard Sd., Mass.

**53a. Asterias Forbesii** Verrill.  
U. S. F. C.—Vineyard Sd., Mass.

**54. Leptasterias compta** Verrill.  
U. S. F. C.—Off Watch Hill, R. I., 22 fath.

**55. Cribrella sanguinolenta** Lütken.  
U. S. F. C.—Mass. Bay, Gulf of Maine.

**55a. Hippasteria phrygiana** Agassiz.  
U. S. F. C.—Off Mass. Bay, 30 to 80 fath.,  
1878-'79.

**56. Ctenodiscus crispatus** D. and Kor.  
U. S. F. C.—Mass. Bay, 40 to 50 fath.

**56a. Ctenodiscus crispatus** D. and Kor.  
Dry.  
U. S. F. C.—Mass. Bay, 40 to 50 fath.

**OPHIUROIDEA.**

**57. Ophiopholis aculeata** Gray.  
U. S. F. C.—Bay of Fundy, 10 to 100 fath.

**58. Ophiopholis aculeata** Gray.  
U. S. F. C.—Mass. Bay and Gulf of Maine,  
10 to 100 fath.

**59. Ophioglypha Sarsii** Lyman.  
U. S. F. C.—Mass. Bay, 20 to 125 fath.

**59a. Ophioglypha Sarsii** Lyman. Dry.  
U. S. F. C.—Mass. Bay, 20 to 125 fath.

**60. Ophioglypha robusta** Lyman.  
U. S. F. C.—Bay of Fundy.

**60a. Astrophyton Agassizii** Stimp.  
U. S. F. C.—Eastport, Maine.

**60b. Astrophyton Agassizii** Stimp.  
U. S. F. C.—Off Cape Cod, 25 to 35 fath., '79.

**60c. Astrophyton Agassizii** Stimp. Dry.  
U. S. F. C.—Off Cape Cod, 25 to 35 fath., '79.

**ANTHOZOA.**

**61. Urticina nodosa** Verrill.  
U. S. F. C.—Gulf of Maine, 50 to 175 fath.

**61a. Urticina nodosa** Verrill.  
U. S. F. C.—Off Nova Scotia.

**62. Bolocera Tuediæ** Gosse.  
U. S. F. C.—Gulf of Maine, 50 to 175 fath.

**63. Metridium marginatum** Edw. and H.  
U. S. F. C.—Noank, Conn.

**64. Alcyonium carneum** Agassiz.  
U. S. F. C.—Casco Bay, 10 to 60 fath.

**64a. Alcyonium carneum** Agassiz.  
U. S. F. C.—Off Cape Cod, 25 to 35 fath., '79.

**HYDROIDA.**

**65. Obelia geniculata** Hincks.  
U. S. F. C.—Vineyard Sd., Mass.

66. *Obelia dichotoma* Hincks.  
U. S. F. C.—Casco Bay, Maine.
67. *Campanularia flexuosa* Hincks.  
U. S. F. C.—Bay of Fundy.
68. *Sertularia cupressina* Linné.  
U. S. F. C.—Nantucket Shoals.
69. *Sertularia argentea* Ellis and Sol.  
U. S. F. C.—Long Island Sound.
70. *Sertularia pumila* Linné.  
U. S. F. C.—Gloucester, Mass., low water.
71. *Hydrallmania falcata* Hincks.  
U. S. F. C.—Bay of Fundy, 10 to 60 fath.
72. *Sertularella tricuspidata* Hincks.  
U. S. F. C.—Bay of Fundy, 50 to 55 fath.
73. *Diphasia fallax* Agassiz.  
U. S. F. C.—Bay of Fundy, 20 to 55 fath.
- 73a. *Diphasia fallax* Agassiz.  
U. S. F. C.—Vineyard Sd., Mass.
74. *Gobiceps tiarella* Ayres.  
U. S. F. C.—Vineyard Sd., Mass.
- 74a. *Thamnocnida spectabilis* Agassiz.  
U. S. F. C.—Noank, Conn.
75. *Halecium halecinum* Sweig.  
U. S. F. C.—Long I. Sound, 8 to 12 fath.

## CEPHALOPODA.

- 75a. *Ommastrephes illecebrosa* (Les.)  
U. S. F. C.—Cape Cod Bay, 1879.
76. *Loligo Pealii* Lesueur.  
U. S. F. C.—Vineyard Sd., Mass.
- 76a. *Loligo Pealii* Lesueur. Young.  
U. S. F. C.—Vineyard Sd., Mass.

## GASTROPODA.

77. *Fulgur carica* Conrad.  
U. S. F. C.—Vineyard Sd., Mass.
78. *Neptunea decemcostata* Ad. Dry.  
U. S. F. C.—Eastport, Maine.
79. *Buccinum undatum* Linné. Dry.  
U. S. F. C.—Bay of Fundy.
80. *Tritia trivittata* H. and A. Ad. Dry.  
U. S. F. C.—Vineyard Sd., Mass.
81. *Ilyanassa obsoleta* Stimpson. Dry.  
U. S. F. C.—Vineyard Sd., Mass.
- 81a. *Ilyanassa obsoleta* Stimpson.  
U. S. F. C.—Gloucester, Mass.
82. *Urosalpinx cinerea* Stimpson. Dry.  
U. S. F. C.—Vineyard Sd., Mass.

83. *Purpura lapillus* Lamarek.  
U. S. F. C.—Gloucester, Mass.
- 83a. *Purpura lapillus* Lamarek. Dry.  
U. S. F. C.—Casco Bay, Maine.
84. *Anachis avara* Perkins. Dry.  
U. S. F. C.—Vineyard Sd., Mass.
85. *Astyris lunata* Dall. Dry.  
U. S. F. C.—Vineyard Sd., Mass.
86. *Lunatia heros* H. and A. Ad. Dry.  
U. S. F. C.—Vineyard Sd., Mass.
- 86a. *Lunatia heros* H. and A. Ad.  
U. S. F. C.—Vineyard Sd., Mass.
87. *Lunatia heros* H. and A. Ad.  
U. S. F. C.—Gloucester, Mass.
88. *Littorina littorea* Menke.  
U. S. F. C.—Gloucester, Mass.
- 88a. *Littorina palliata* Gould. Dry.  
U. S. F. C.—Casco Bay, Maine.
89. *Littorina palliata* Gould.  
U. S. F. C.—Gloucester, Mass.
- 89a. *Littorina rudis* Gould.  
U. S. F. C.—Casco Bay, Maine.
90. *Lacuna vincta* Turton.  
U. S. F. C.—Gloucester, Mass.
91. *Bittium nigrum* Stimpson. Dry.  
U. S. F. C.—Vineyard Sd., Mass.
92. *Crepidula fornicata* Lam. Dry.  
U. S. F. C.—Vineyard Sd., Mass.
93. *Crepidula plana* Say. Dry.  
U. S. F. C.—Vineyard Sd., Mass.
94. *Crucibulum striatum* H. and A. Ad.  
Dry.  
U. S. F. C.—Vineyard Sound.

95. *Margarita helicina* Möll. Dry.  
U. S. F. C.—Grand Menan.

96. *Acmaea testudinalis* Han.  
U. S. F. C.—Casco Bay, Maine.
- 96a. *Trachydermon ruber* Carpenter.  
U. S. F. C.—Eastport, Maine.
97. *Melampus lineatus* Say. Dry.  
U. S. F. C.—Barnstable, Mass.

## SCAPHOPODA.

98. *Entalis striolata* Stimpson. Dry.  
U. S. F. C.—Eastport, Maine.

## LAMELLIBRANCHIATA.

99. *Clidiophora trilineata* Carp. Dry.  
U. S. F. C.—Vineyard Sd., Mass.

- 100. *Spisula solidissima* Gray.** Dry.  
U. S. F. C.—Vineyard Sd., Mass.
- 100a. *Spisula solidissima* Gray.** Dry.  
Young.  
U. S. F. C.—Vineyard Sd., Mass.
- 101. *Spisula ovalis* Gould.** Dry.  
U. S. F. C.—Off Cape Ann, Mass.
- 101a. *Spisula ovalis* Gould.** Dry.  
U. S. F. C.—Grand Menan.
- 102. *Macoma sabulosa* Möreh.** Dry.  
U. S. F. C.—Mass. Bay and Gulf of Maine.
- 103. *Venus mercenaria* Linné.** Dry.  
U. S. F. C.—New Haven, Conn.
- 103a. *Venus mercenaria* Linné.** Dry.  
U. S. F. C.—Nantucket, Mass.
- 104. *Cyprina Islandica* Lam.** Dry.  
U. S. F. C.—Mass. Bay, Gulf of Maine.
- 105. *Astarte undata* Gould.** Dry.  
U. S. F. C.—Eastport, Me.
- 106. *Yoldia limatula* Woodw.** Dry.  
U. S. F. C.—Vineyard Sd., Mass.
- 107. *Yoldia thraciformis* Stimp.** Dry.  
U. S. F. C.—Mass. Bay, Gulf of Maine.
- 108. *Scapharca transversa* Ad.** Dry.  
U. S. F. C.—Vineyard Sd., Mass.
- 108a. *Modiola plicatula* Lamk.**  
U. S. F. C.—New Haven, Conn., shore.
- 109. *Modiola modiolus* Turton.** Dry.  
U. S. F. C.—Vineyard Sd., Mass.
- 109a. *Modiola modiolus* Turton.** Dry.  
U. S. F. C.—Gloucester, Mass.
- 109b. *Mytilus edulis* Linné.**  
U. S. F. C.—New Haven, Conn., shore.
- 110. *Pecten irradians* Lam.** Dry.  
U. S. F. C.—Vineyard Sd., Mass.
- 111. *Pecten tenuicostatus* Migh.** Dry.  
U. S. F. C.—Off Watch Hill, R. I., 22 fath.
- 111a. *Pecten tenuicostatus* Mighels.**  
U. S. F. C.—Off Watch Hill, R. I., 22 fath.
- 112. *Anomia aculeata* Gmelin.** Dry.  
U. S. F. C.—Casco Bay, Maine.
- 112a. *Ostrea Virginiana* Lister.** Dry.  
U. S. F. C.—New Haven, Conn.
- 113. *Venericardia borealis* Carp.** Dry.  
U. S. F. C.—Off Noank, Conn.
- 114. *Nucula proxima* Say.** Dry.  
U. S. F. C.—Buzzard's Bay and Vineyard Sd.
- 115. *Mya arenaria* Linné.**  
U. S. F. C.—Guilford, Conn.
- 116. *Ensatella Americana* Verrill.**  
U. S. F. C.—Barnstable, Mass.
- 117. *Saxicava arctica* Desh.**  
U. S. F. C.—Casco Bay, Maine.
- 118. *Callista convexa* Ad.** Dry.  
U. S. F. C.—Vineyard Sd., Mass.
- 119. *Totentia gemma* Perkins.** Dry.  
U. S. F. C.—Long Island Sd., with *Littorinella minuta* St.

**TUNICATA.**

- 120. *Ascidia mollis* Verrill.**  
U. S. F. C.—Gulf of Maine, 50 to 175 fath.
- 121. *Ascidiopsis complanata* Verrill.**  
U. S. F. C.—Bay of Fundy, shore to 50 fath.
- 122. *Molgula retortiformis* Verrill.**  
U. S. F. C.—Bay of Fundy, 10 to 25 fath.
- 123. *Molgula Manhattensis* Verrill.**  
U. S. F. C.—Vineyard Sd., Mass.
- 123b. *Molgula Manhattensis* Verrill.**  
U. S. F. C.—Cape Cod, outer shore, 1879.
- 124. *Glandula arenicola* Verrill.**  
U. S. F. C.—Vineyard Sd., 10 to 20 fath.
- 125. *Halocynthia partita* Verrill.**  
U. S. F. C.—Vineyard Sd., 3 to 12 fath.
- 126. *Halocynthia echinata* Verrill.**  
U. S. F. C.—Grand Menan, 1 to 40 fath.
- 127. *Halocynthia pyriformis* Verrill.**  
U. S. F. C.—Bay of Fundy, 1 to 45 fath.
- 128. *Boltenia Bolteni* (Linné).**  
U. S. F. C.—Eastport, Maine, 1 to 20 fath.
- 129. *Perophora viridis* Verrill.**  
U. S. F. C.—Vineyard Sd., 1 to 12 fath.
- 130. *Botryllus Gouldii* Verrill.**  
U. S. F. C.—Vineyard Sd., Mass., shore.
- 131. *Amorœcium pellucidum* Verrill.**  
U. S. F. C.—Vineyard Sd., Mass.
- 132. *Amorœcium stellatum* Verrill.**  
U. S. F. C.—Vineyard Sd., Mass.
- 133. *Amorœcium constellatum* Verrill.**  
U. S. F. C.—Off Nantucket, Mass.
- 134. *Leptoclinum albidum* Verrill.**  
U. S. F. C.—Vineyard Sd., Mass.
- 135. *Leptoclinum albidum*, var. *luteolum* Verrill.**  
U. S. F. C.—Vineyard Sd., Mass.

136. *Salpa Caboti* Desor.  
U. S. F. C.—Vineyard Sd., Mass., surface.

## BRACHIOPODA.

137. *Terebratulina septentrionalis* Gr.  
U. S. F. C.—Casco Bay, Maine.  
137a. *Terebratulina septentrionalis* Gr.  
U. S. F. C.—Eastport, Maine, 1 to 60 fath.

## POLYZOA or BRYOZOA.

138. *Crisia eburnea* Lamouroux.  
U. S. F. C.—Gloucester Harbor, Mass.  
139. *Tubulipora serpens* Flem.  
U. S. F. C.—Vineyard Sound, Mass.  
140. *Tubulipora Atlantica* Smitt.  
U. S. F. C.—Bay of Fundy.  
141. *Alcyonidium ramosum* Verrill.  
U. S. F. C.—New Haven, Conn.  
142. *Flustrella hispida* Gray.  
U. S. F. C.—Gloucester, Mass., shore.  
143. *Gemellaria loricata* Busk.  
U. S. F. C.—Casco Bay, Maine.  
143a. *Gemellaria loricata* Busk.  
U. S. F. C.—Off Cape Cod, 20 to 40 fath.,  
1879.  
144. *Cellularia ternata* Johnst. (var.)  
U. S. F. C.—Gulf of Maine, 10 to 45 fath.  
145. *Caberea Ellisii* Smitt.  
U. S. F. C.—Bay of Fundy, 1 to 20 fath.  
146. *Bugula Murrayana* Busk.  
U. S. F. C.—Nantucket Shoals, 8 to 12 fath.  
147. *Bugula turrita* Verrill.  
U. S. F. C.—Vineyard Sd. and off Nan-  
tucket Island.  
148. *Mucronella nitida* Verrill. Dry.  
U. S. F. C.—Vineyard Sd., Mass.

149. *Membranipora pilosa* Farré.  
U. S. F. C.—Gloucester, Mass.

- 149a. *Membranipora pilosa* Farré.  
U. S. F. C.—Gloucester, Mass., on algæ.

150. *Escharina Isabelliana* D'Orb. Dry.  
U. S. F. C.—Vineyard Sound, Mass.

151. *Hippothoa hyalina* Smitt. Dry.  
U. S. F. C.—Vineyard Sd., Mass.

152. *Lepralia Americana* Verrill. Dry.  
U. S. F. C.—Gloucester, Mass., shore.

## PORIFERA (SPONGES).

153. *Microciona prolifera* Verrill. Dry.  
U. S. F. C.—Vineyard Sd. and Long I. Sd.

154. *Chalina oculata* Bowerb. Dry.  
U. S. F. C.—Vineyard Sd., Mass.

- 154a. *Chalina oculata* Bowerb. Dry.  
U. S. F. C.—Casco Bay, Maine.

155. *Suberites compacta* Verrill. Dry.  
U. S. F. C.—Off Nantucket, Mass.

156. *Suberites compacta* Verrill.  
U. S. F. C.—Off Nantucket I., Mass.

- 156a. *Suberites compacta* Verrill.  
U. S. F. C.—Cape Cod Bay, 15 fath.

- 156aa. *Suberites compacta* Verrill. Dry.  
U. S. F. C.—Cape Cod Bay, 15 fath.

157. *Cliona sulphurea* Verrill. Dry.  
U. S. F. C.—Vineyard Sd., Mass.

158. *Tethya gravata* Hyatt.  
U. S. F. C.—Buzzard's Bay, Mass.

159. *Tethya gravata* Hyatt. Dry.  
U. S. F. C.—Buzzard's Bay, Mass.

160. *Raphiodesma lingua* Bow. Dry.  
U. S. F. C.—Bay of Fundy, 10 to 60 fath.

**OCCURRENCE OF CHELURA TEREBRANS, A CRUSTACEAN DESTRUCTIVE TO THE TIMBER OF SUBMARINE STRUCTURES, ON THE COAST OF THE UNITED STATES.**

By **SIDNEY I. SMITH.**

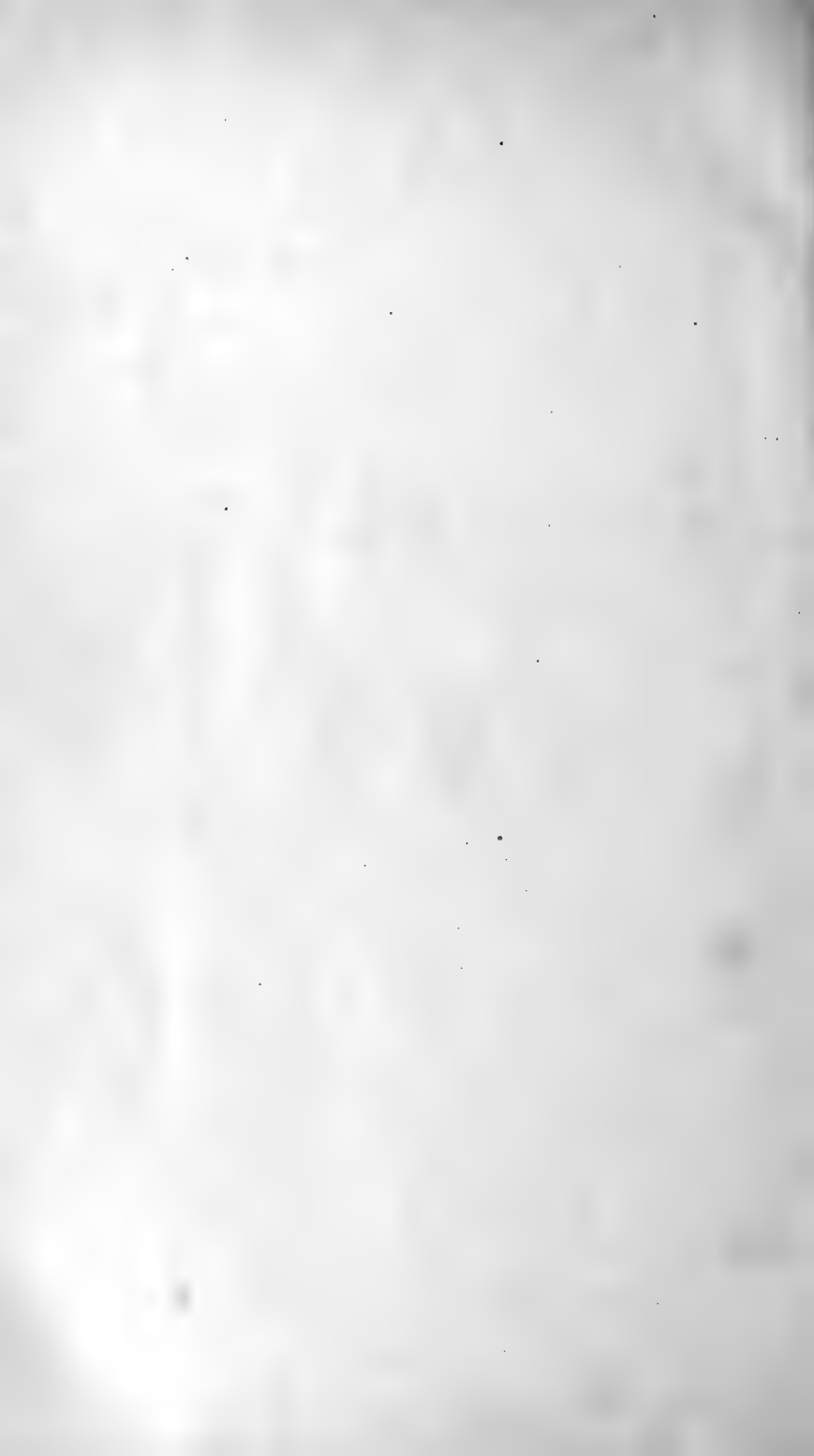
Upon the coast of Europe an Amphipod belonging to the genus *Chelura* has long been known, associated with the Isopod *Limnoria lignorum*, or "gribble" of English writers, in destroying the timber of all kinds of submarine structures. But, upon the coast of the United States, the *Chelura* has apparently escaped detection until very recently, and I





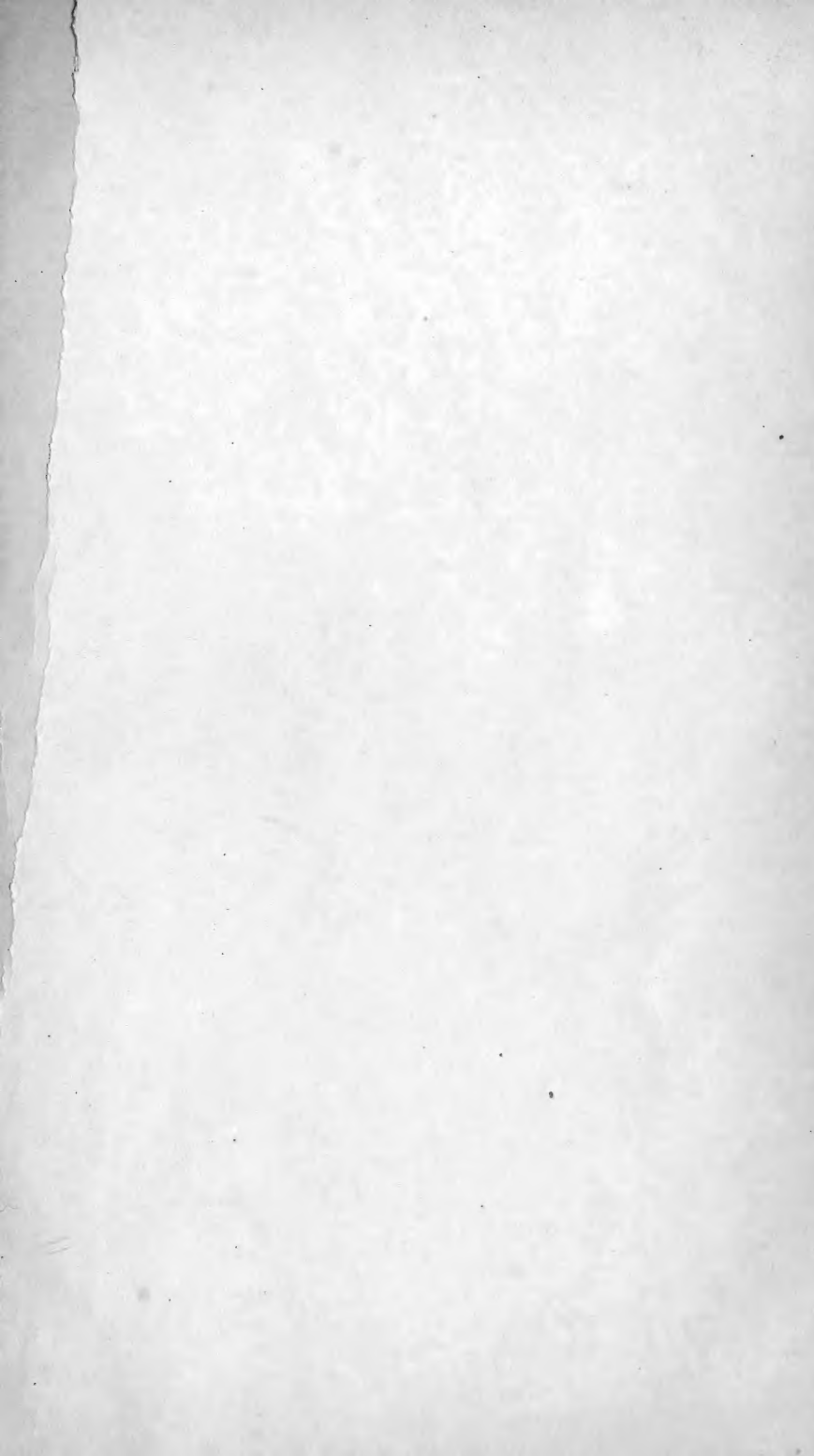


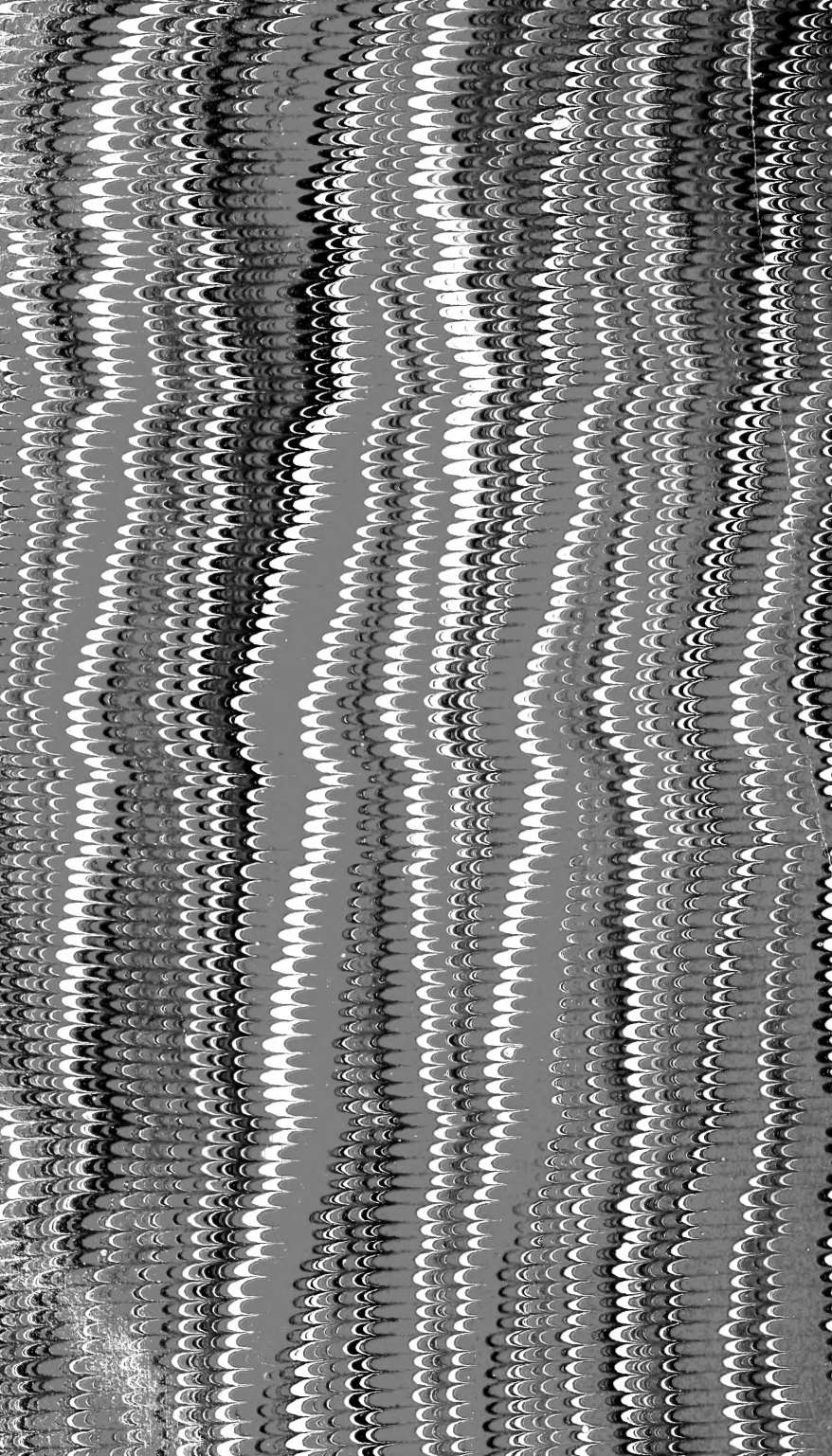


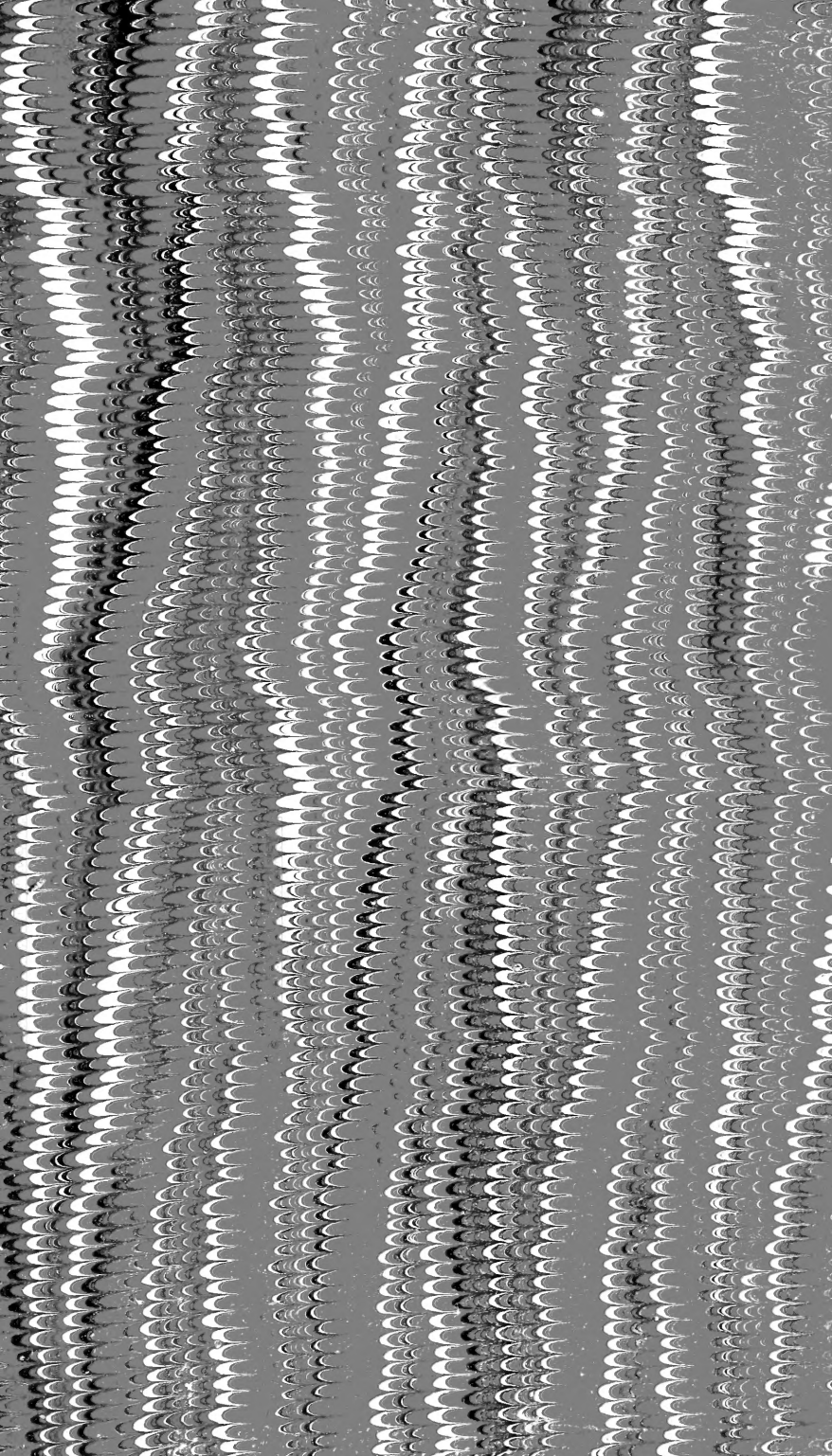












SMITHSONIAN INSTITUTION LIBRARIES



3 9088 01348 4373